



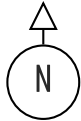
VIVIERE

LUXURY COLLECTION

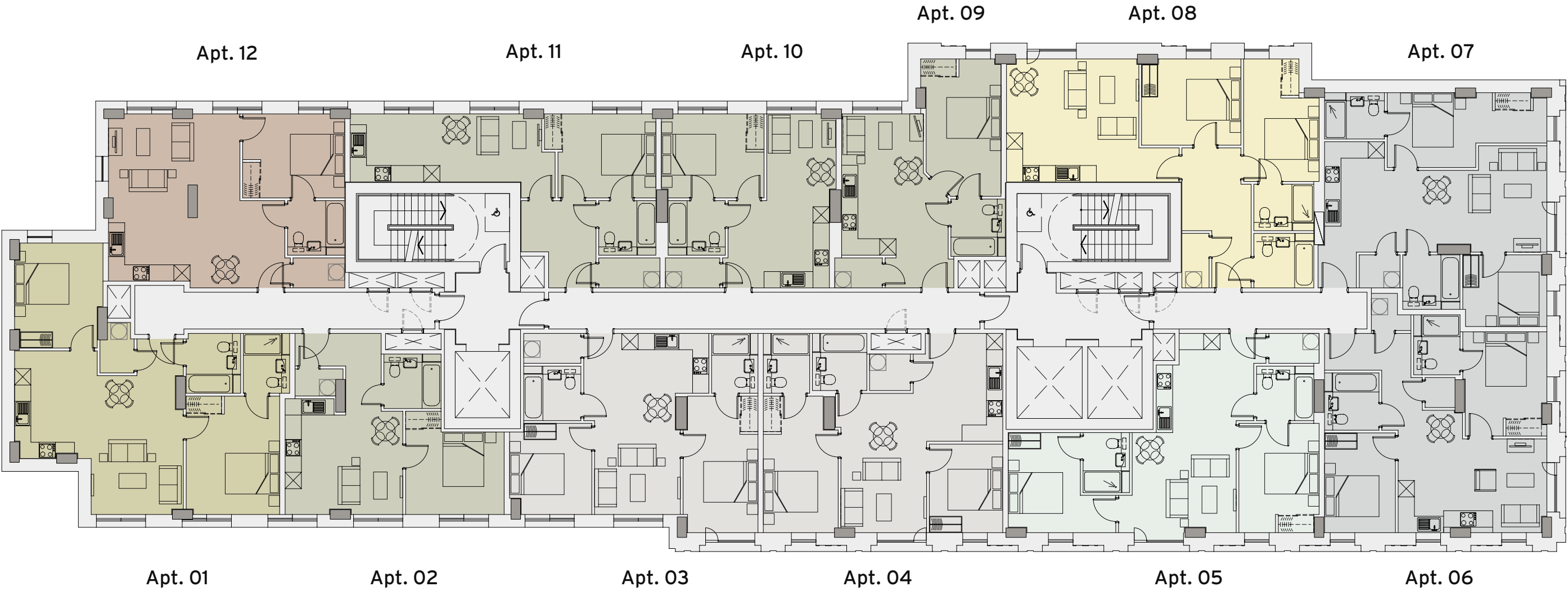
LUXURY LIVING ABOVE THE REST

Indicative Twenty First to Twenty Second Floor

- 1 Bedroom Apartment
- 2 Bedroom Apartment
- 2 Bedroom Apartment
- 1 Bedroom Apartment
- 2 Bedroom Apartment
- 2 Bedroom Apartment
- 2 Bedroom Apartment



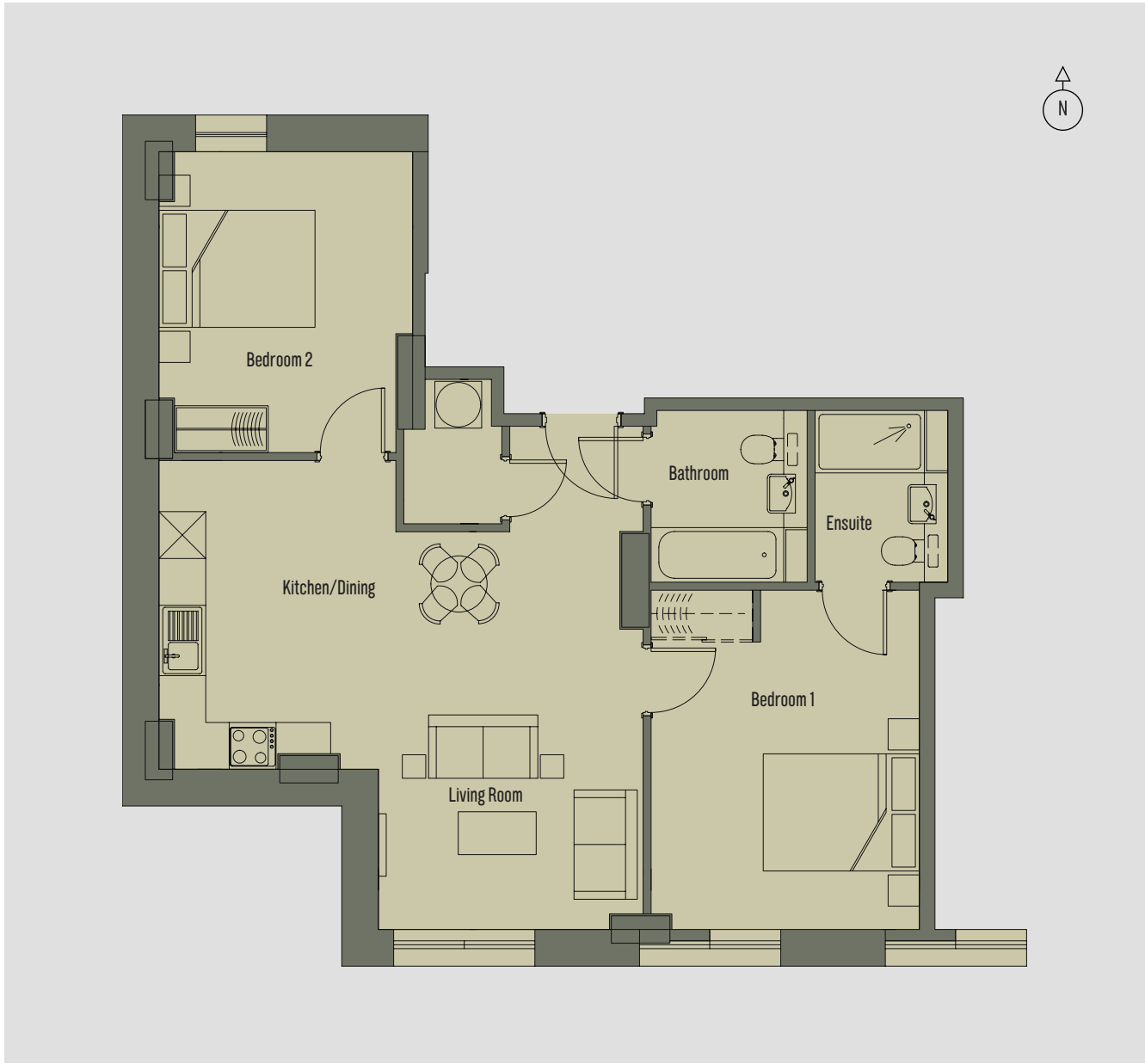
2



3

2 Bedroom Apartment
Apartment 1 - 70 sq m

Room	Dimensions
Kitchen/Dining/Living Room	6.18m x 5.08m
Bedroom 1	4.33m x 3.42m
Bedroom 2	3.84m x 3.24m



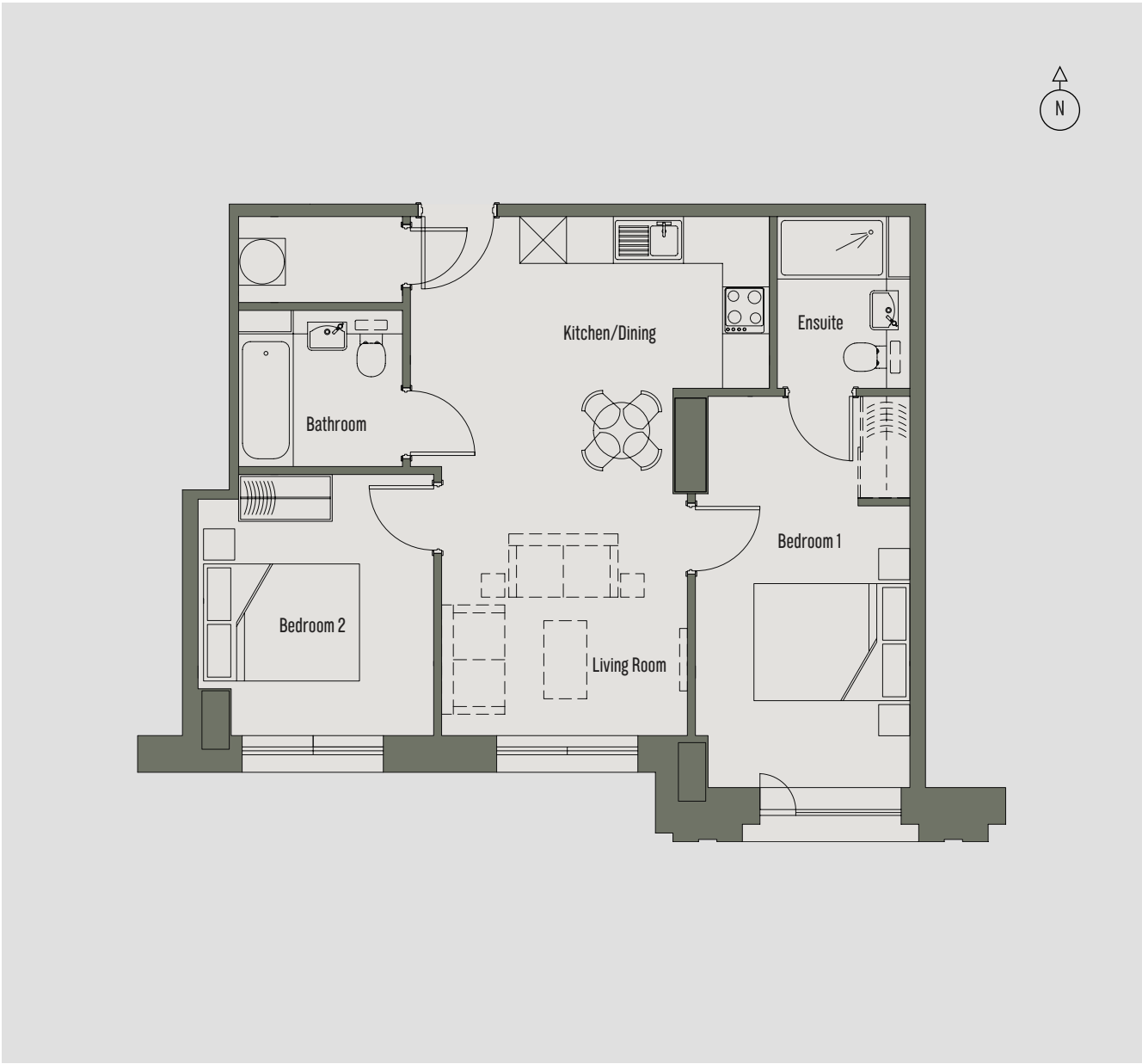
1 Bedroom Apartment
Apartment 2 - 43 sq m

Room	Dimensions
Kitchen/Dining/Living Room	4.31m x 4.23m
Bedroom	3.77m x 3.61m



2 Bedroom Apartment
Apartment 3 - 61 sq m

Room	Dimensions
Kitchen/Dining/Living Room	6.63m x 4.58m
Bedroom 1	4.99m x 2.75m
Bedroom 2	3.33m x 3.01m



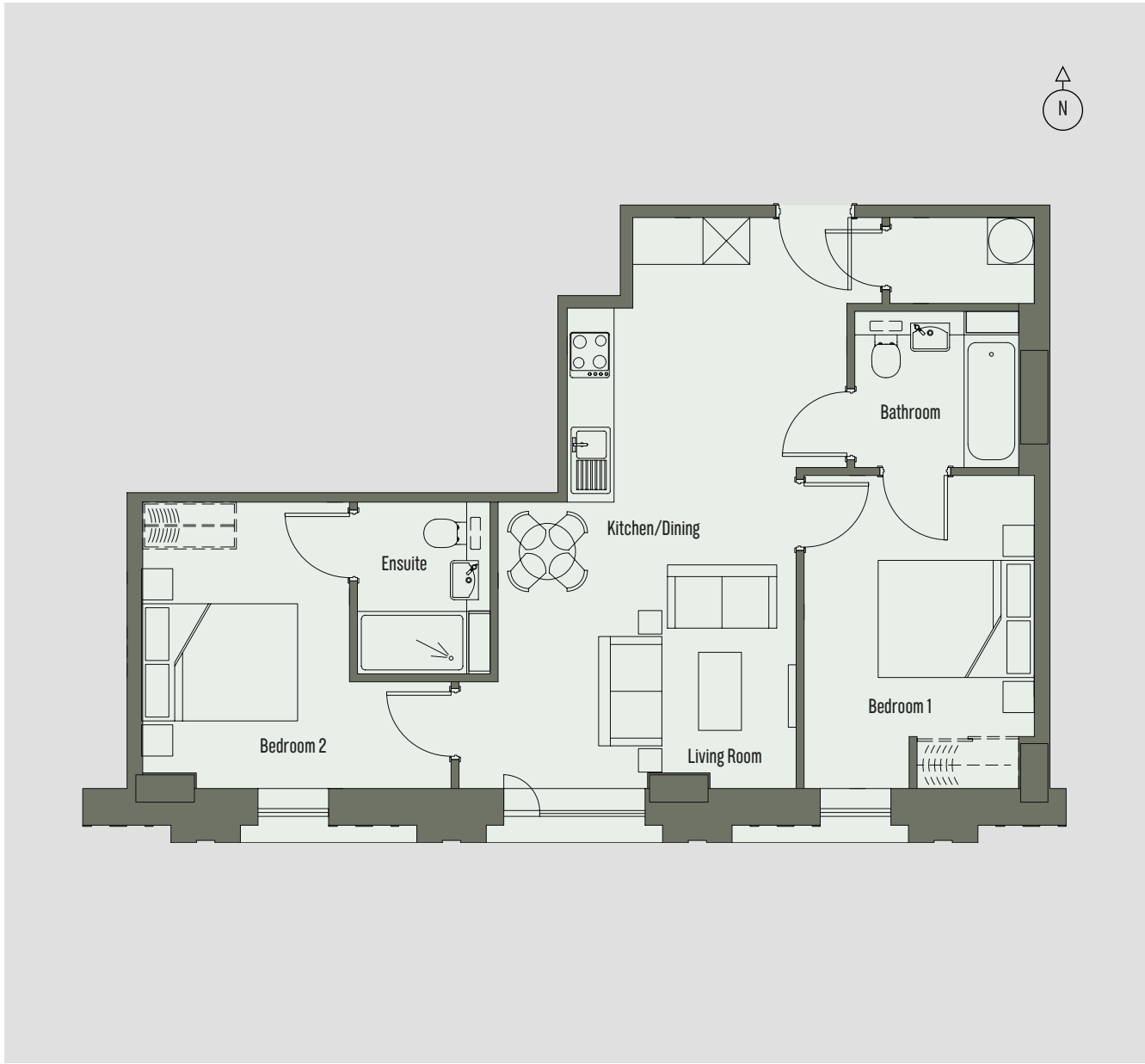
2 Bedroom Apartment
Apartment 4 - 63 sq m

Room	Dimensions
Kitchen/Dining/Living Room	5.09m x 3.14m
Bedroom 1	5.00m x 2.75m
Bedroom 2	3.24m x 2.70m



2 Bedroom Apartment
Apartment 5 - 62 sq m

Room	Dimensions
Kitchen/Dining/Living Room	7.30m x 3.62m
Bedroom 1	3.99m x 2.95m
Bedroom 2	3.65m x 2.65m



2 Bedroom Apartment
Apartment 6 - 63 sq m

Room	Dimensions
Kitchen/Dining/Living Room	5.47m x 4.47m
Bedroom 1	3.81m x 3.09m
Bedroom 2	3.66m x 2.80m



2 Bedroom Apartment
Apartment 7 - 65 sq m

Room	Dimensions
Kitchen/Dining/Living Room	8.15m x 5.34m
Bedroom 1	5.85m x 2.75m
Bedroom 2	3.08m x 2.61m



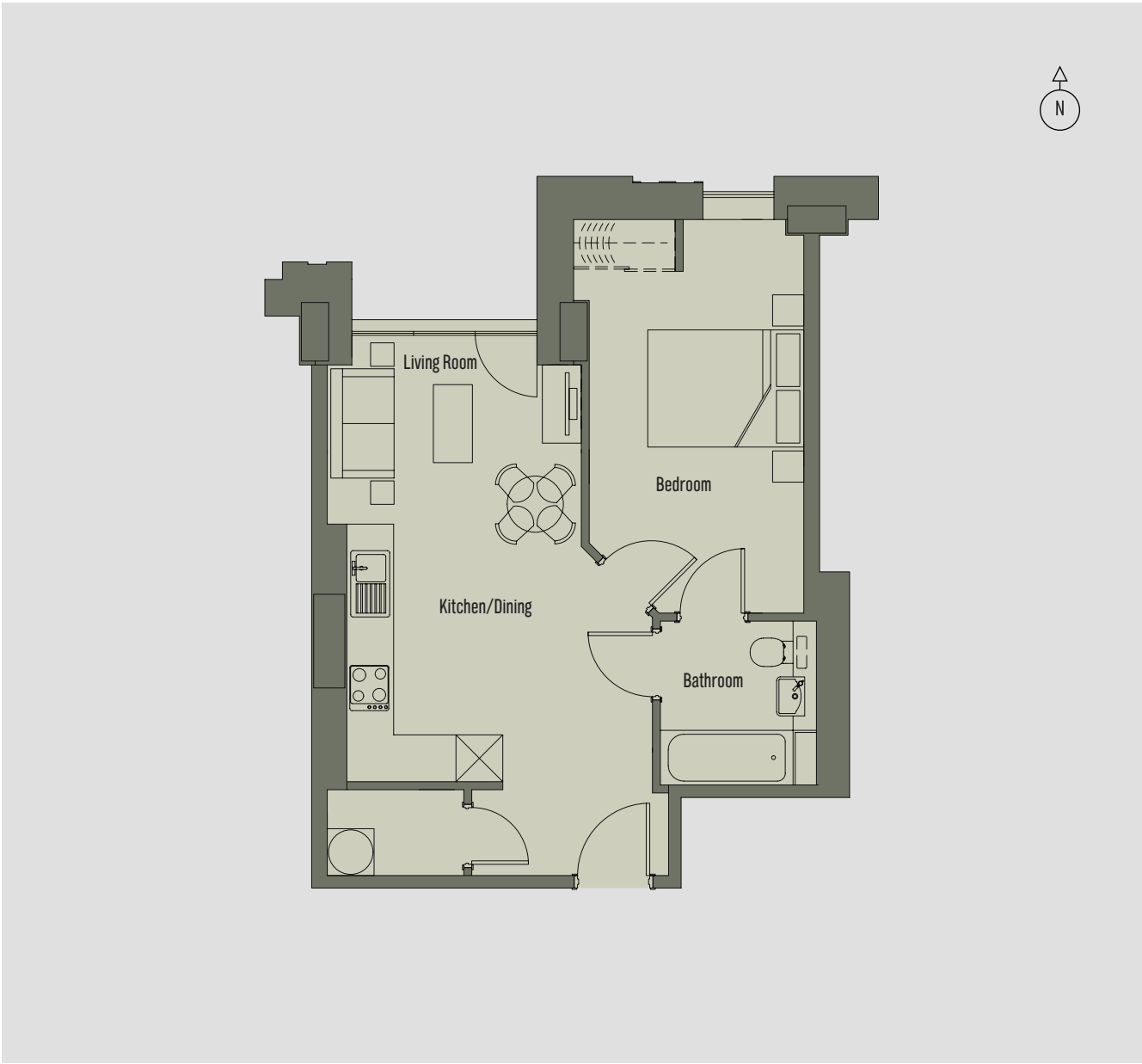
2 Bedroom Apartment
Apartment 8 - 70 sq m

Room	Dimensions
Kitchen/Dining/Living Room	4.86m x 4.50m
Bedroom 1	4.49m x 2.78m
Bedroom 2	3.65m x 3.16m



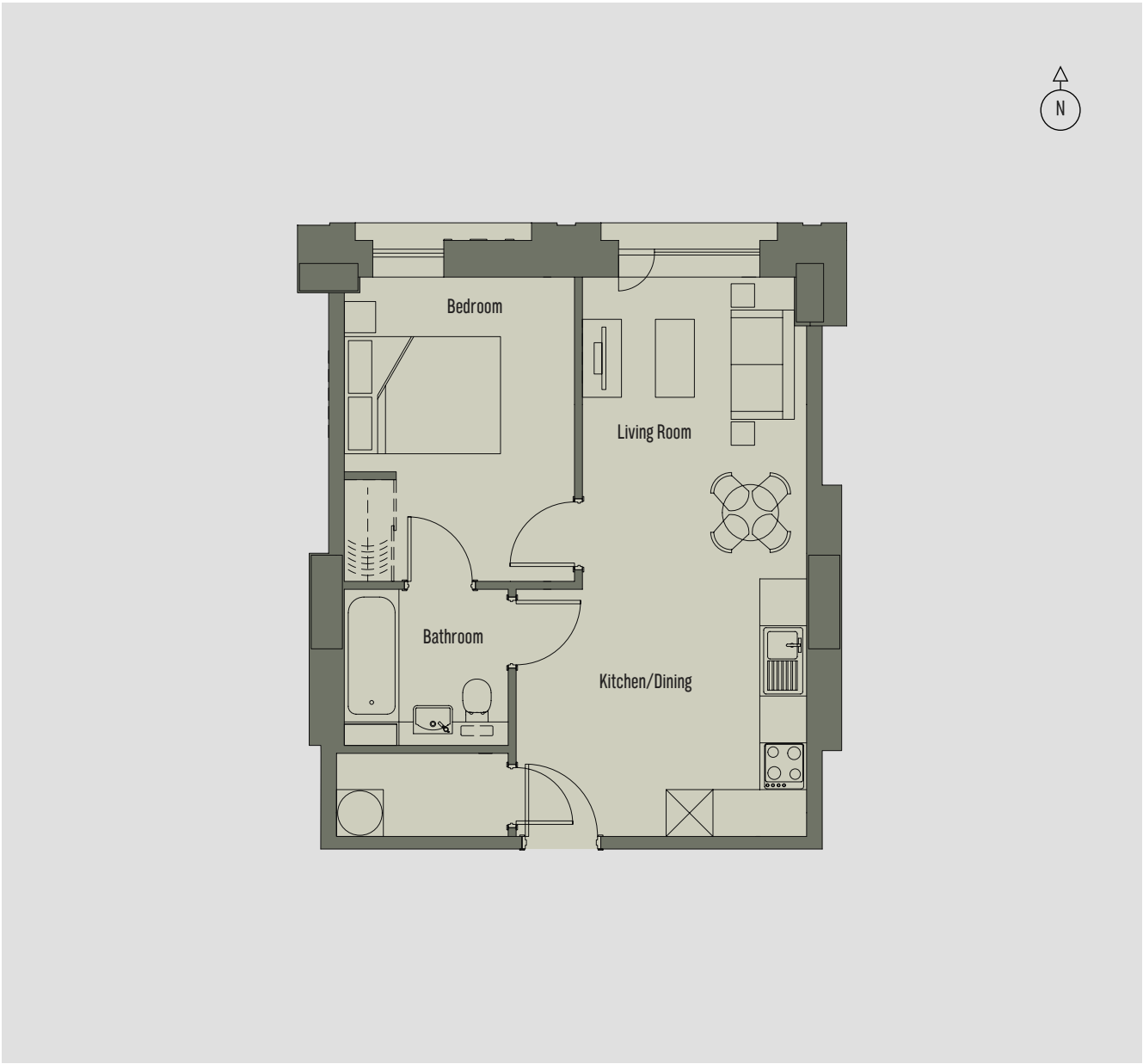
1 Bedroom Apartment
Apartment 9 - 43 sq m

Room	Dimensions
Kitchen/Dining/Living Room	6.52m x 3.54m
Bedroom	5.02m x 2.75m



1 Bedroom Apartment
Apartment 10 - 43 sq m

Room	Dimensions
Kitchen/Dining/Living Room	7.14m x 3.72m
Bedroom	3.88m x 2.95m



1 Bedroom Apartment
Apartment 11 - 46 sq m

Room	Dimensions
Kitchen/Dining/Living Room	7.02m x 2.48m
Bedroom	4.09m x 3.07m



1 Bedroom Apartment
Apartment 12 - 55 sq m

Room	Dimensions
Kitchen/Dining/Living Room	6.46m x 6.37m
Bedroom	3.75m x 3.08m





CGI OF A KITCHEN AT VIVERE

Meticulously designed with the finest specification.

LIVING ROOM

Wood effect plank flooring
Electric Heating with flat panel heaters throughout
Low-voltage LED ceiling mounted downlighters
Stainless steel switches and power sockets
Ultra-fast broadband connection

BATHROOMS

Illuminated mirrors
Quartz Silestone work top
Premium sanitary ware
Walls fully tiled to bath areas
Heated chrome towel rail
Main bathrooms – WC, wash hand basin, bath with overhead shower and screen.
Full-width wall mounted mirror above sink
En-suite bathrooms with WC, wash hand basin with full-width wall mounted mirror, shower cubicle

KITCHENS

Quartz Silestone work tops
High quality manufactured contemporary fitted kitchen units
Stainless steel inset sink
Premium integrated appliances – hob, oven, extractor hood, fridge-freezer, dishwasher.

GENERAL

10 year structural warranty
Secure environment with electronic controlled access and CCTV through the building
CCTV to car park, external grounds and internal communal areas
USB charging points to bedrooms and kitchen
24 Hour concierge

BEDROOMS

Fitted carpets
Fitted wardrobes to master bedrooms
Electric Heating with flat panel heaters
Low voltage LED lighting
Stainless steel sockets and switches
Fitted wardrobes to primary bedroom

Integrated washer/dryer or freestanding in hallway cupboards where space available
LED under-cabinet lighting to worktops
Wood effect plank flooring
Stainless steel sockets and switches



VIVIERE

LUXURY COLLECTION

VIVERERESIDENCES.CO.UK