



GRANVILLE MEWS



555-563
HIGH ROAD | FINCHLEY
N12

Welcome
to
Granville
Mews





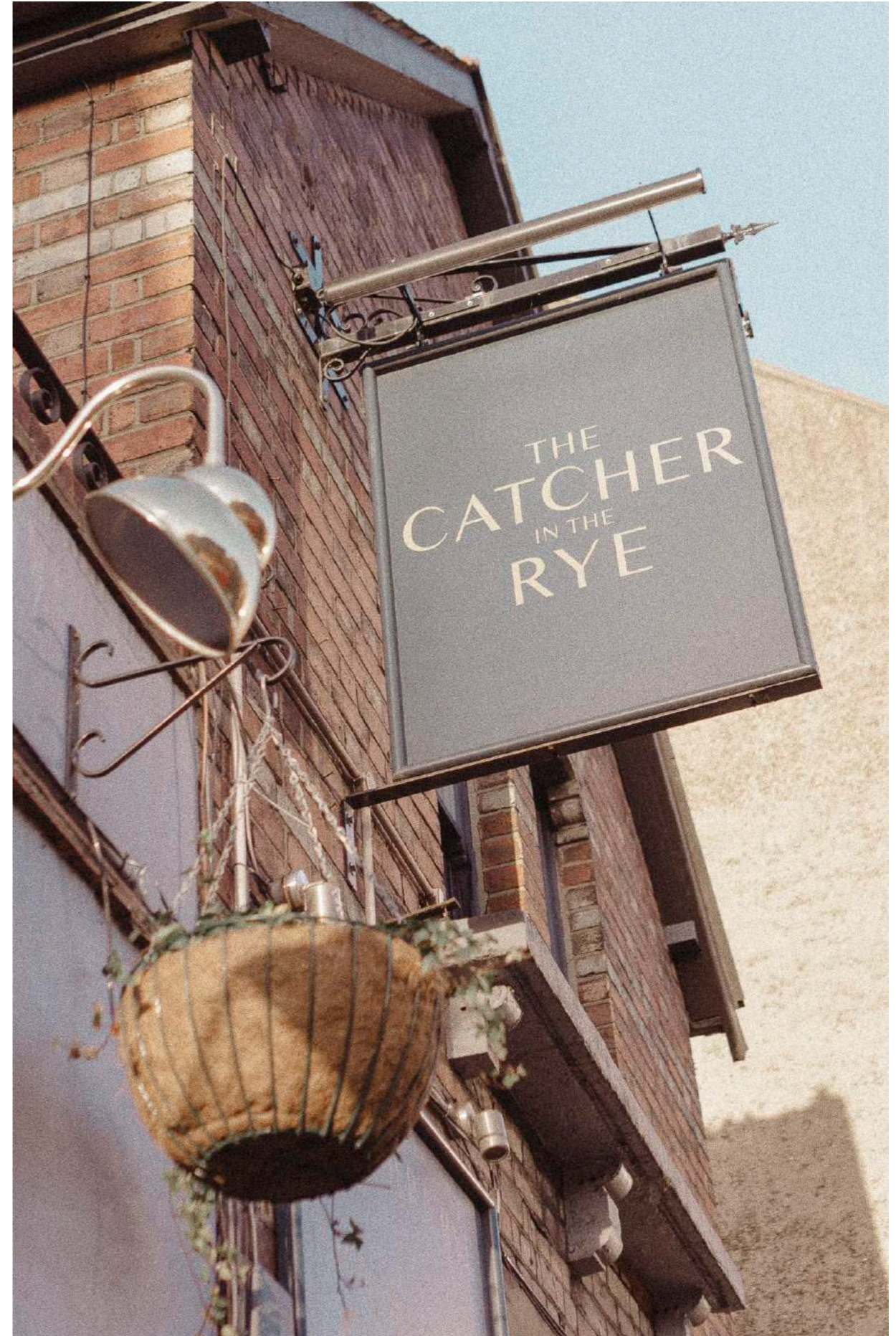
Welcome to Granville Mews. A perfect collection of three-bedroom houses in the heart of relaxing Finchley. This new development combines the benefits of usual London living with the attraction of a friendly, supportive community. This is city living with character.



There's never a shortage of things to do locally, from gorgeous traditional pubs, incredible restaurants with seasonal fare, and vibrant cafes. You'll love everything your new Finchley neighbourhood offers, with plenty of green spaces, communal recreation areas, and a distinct community spirit. We're sure you'll enjoy it so much you'll forget you're only a short journey from the buzz of London.



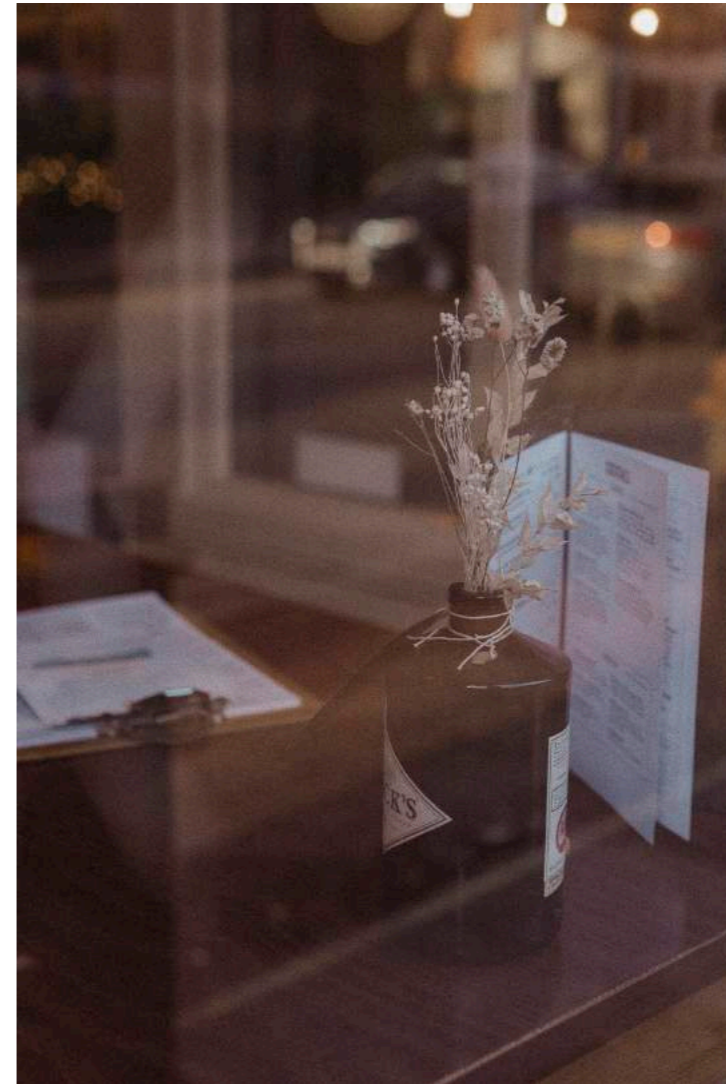
Spend only a few moments in your new neighbourhood and you'll appreciate why the locals love the community lifestyle.



Settling into your new community doesn't just mean meeting your neighbours. It won't take long to see how the Finchley food scene is one of the area's focal points. The abundance of independent cafes and family restaurants means owners, staff, and regulars will also welcome you in.



Enjoy browsing local markets packed with seasonal produce and treats – or venturing into a new pocket of Finchley for a day trip. Granville Mews gives you the perfect opportunity to explore a culturally vibrant area of London that has been a meeting place for food lovers for decades.

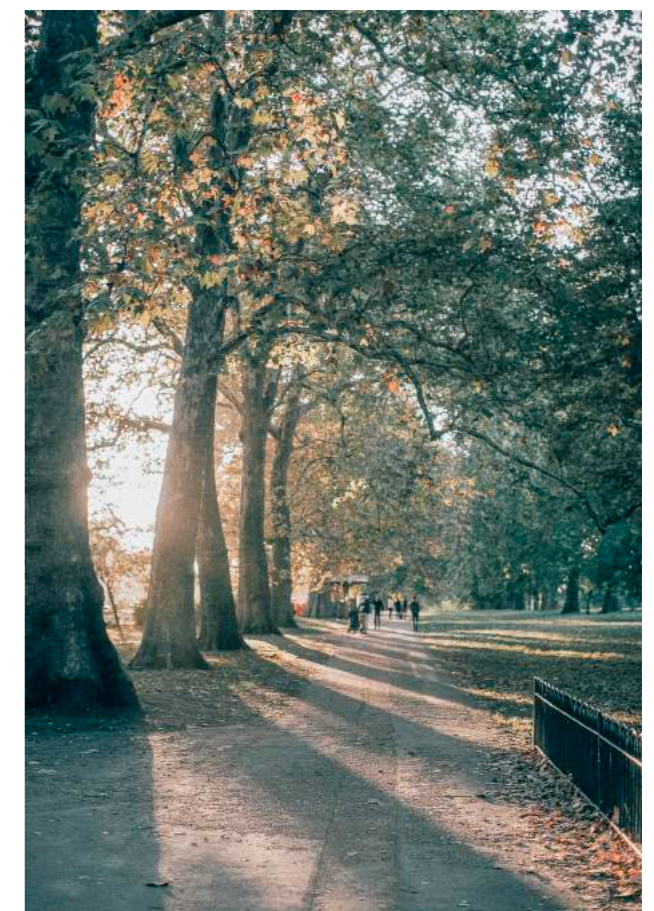


A healthy lifestyle comes hand-in-hand with your new life at Granville Mews. When you've finished exploring the local food scene, you'll adore spending warm summer evenings or cool winter mornings enjoying the expanses of green spaces, gyms and recreational amenities.

Living at Granville Mews means you're only a short distance from Dollis Valley Greenwalk and Victoria Park, while the nearby Zero Gravity Pilates and Park View Health Club will ensure you've got plenty of fitness classes to choose from.



From community activities, weekend markets and an active population, life in Finchley comes with the best of suburban living. So whether it's spending your Sunday at the Finchley Golf Club, or Finchley Lido Leisure Center, there's plenty for everyone. It's the small things that make a new neighbourhood feel like home.



Location Map

Lifestyle

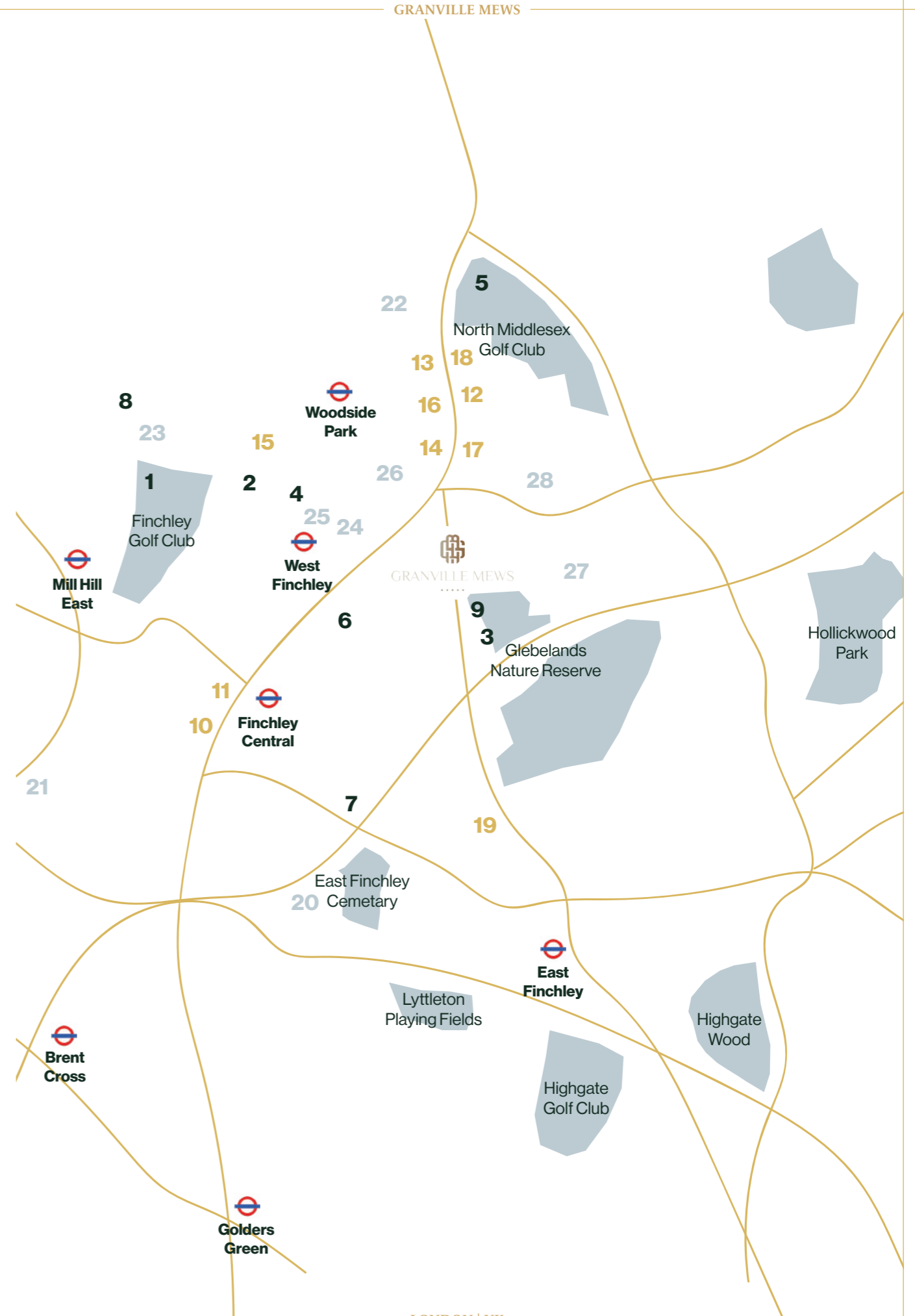
1. Finchley Golf Club
2. Finchley Lawn Tennis Club
3. Finchley Lido Leisure Centre
4. Finchley Yoga
5. North Middlesex Golf Course
6. Park View Health Club
7. Pure Gym
8. The London Equestrian Centre
9. David Lloyd Finchley

Leisure

10. The Catcher in The Rye
11. Tintico
12. Ai Sushi
13. Bella Mia
14. Mk's Place
15. Michael's Brasserie
16. Nippon Izakaya
17. The Bohemia
18. Toolan's Freehouse
19. La Rugoletta

Education

20. Christ College School
21. Hasmonean High School
22. Finchley Catholic High School
23. Frith Manor Primary School
24. Moss Hall Infant School
25. Moss Hall Nursery School
26. St. Michael's Catholic School
27. The Compton School
28. Wren Academy

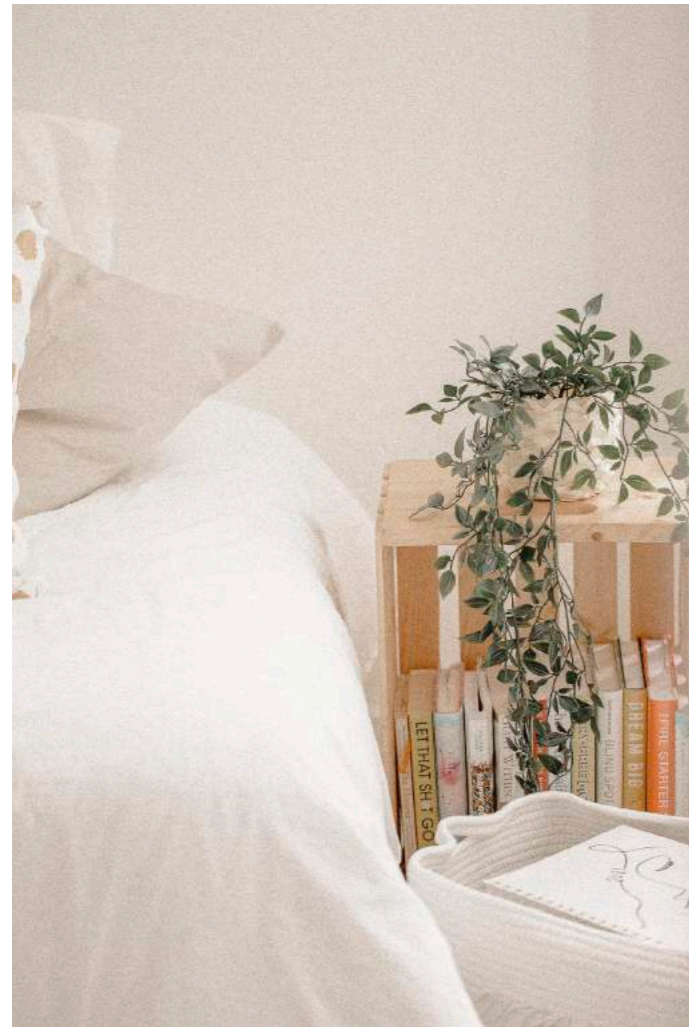


We've combined
the best
of London
living with
the charm
of suburban life.

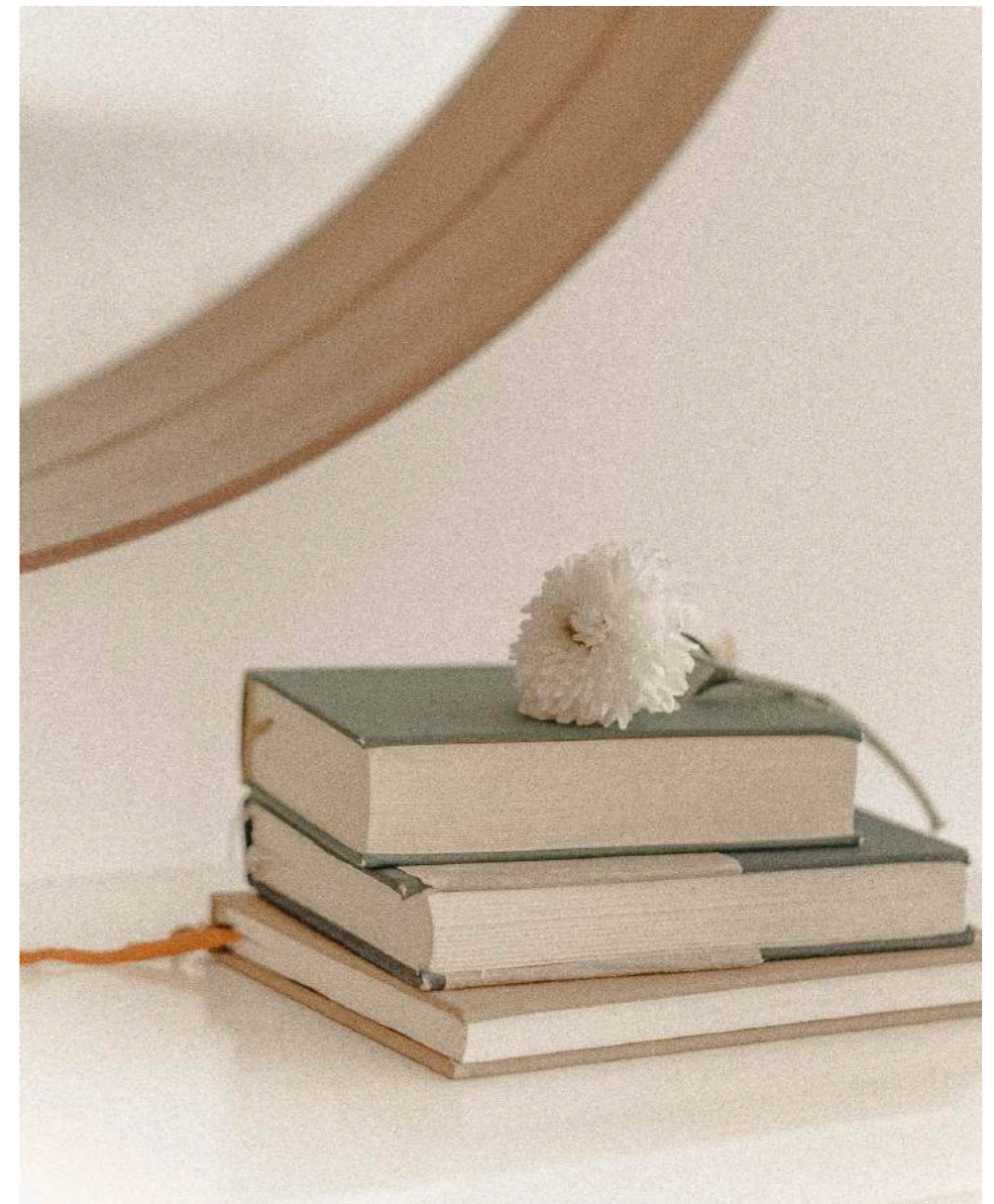
A collection of five contemporary three-bedroom houses, Granville Mews is the ideal place to create your family home. Each house features a stylish interior and modern appliances. Each house has been designed to ensure you enjoy the inside of your house just as much as your new neighbourhood.

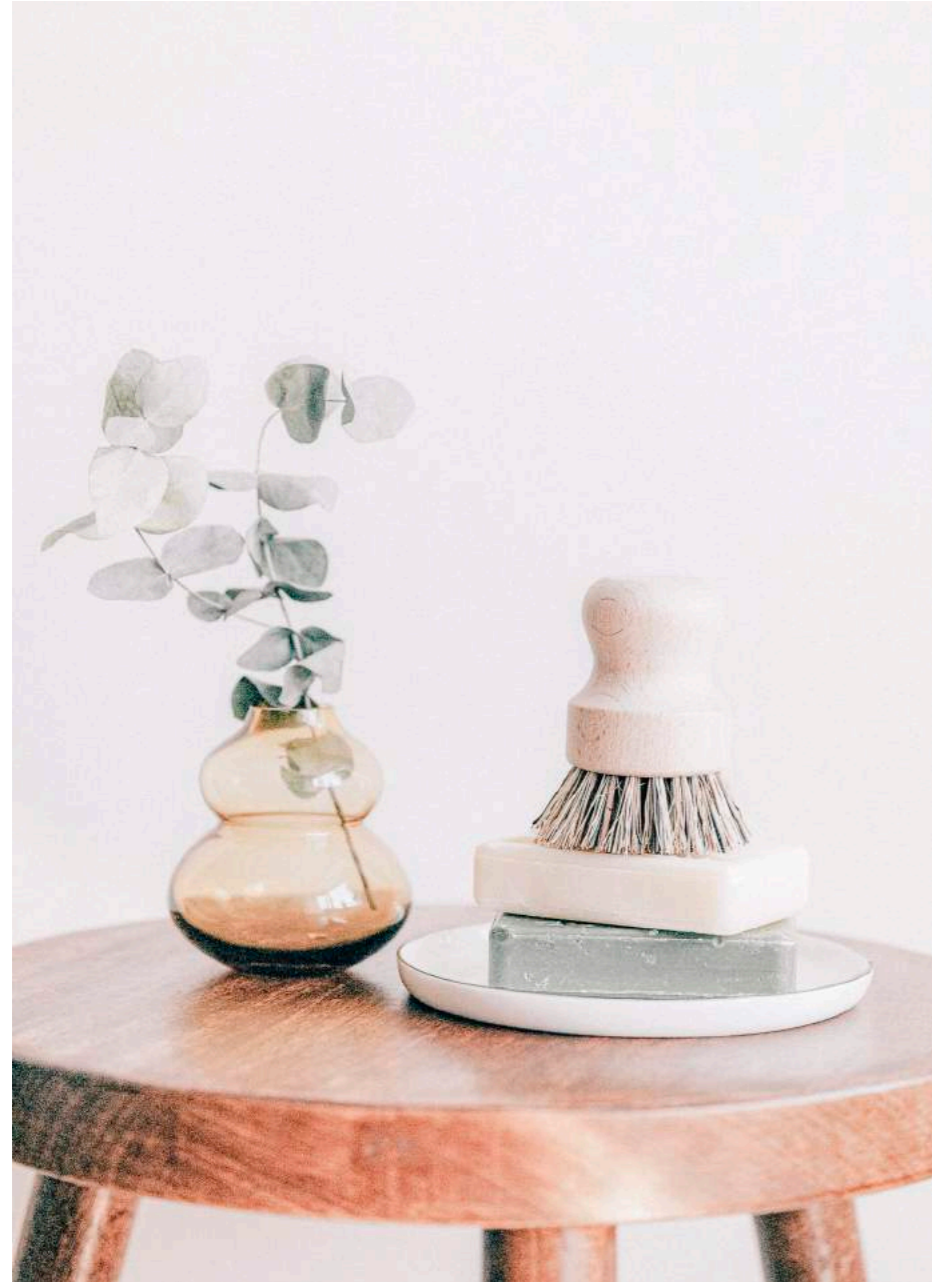


As you'd expect from any Mizen build, each property at Granville Mews has been designed with care from beginning to end. We're a family-owned business and have always taken great pride in creating homes for other families. Life at Granville Mews meets all the demands of modern city living without sacrificing the comfort of a family home.



The design at Granville Mews offers exceptional style from floor to ceiling. With bright, open rooms, and Amtico Spacia flooring, you'll immediately feel comfortable and relaxed – while the inclusion of smart-home technology, like a digital thermostat, means you'll be at ease knowing you're at the forefront of sustainable living.





You'll be impressed by the attention to detail in your new bathrooms at Granville Mews. With gorgeous porcelain wall tiles and brushed metal sockets, you won't have to make any apologies for wanting to spend an extra few moments there every morning.



Specifications

Kitchen

Kitchen Units with Elegant Handle-less Cupboards
 Quartz Countertop
 Bosch Hob
 Bosch Dishwasher
 Extractor Hood
 1 1/2 Stainless Steel Sink
 Integrated Bosch Fridge Freezer
 Combined Washing Machine & Dryer

Bathroom

Chrome Heated Towel Rail
 Porcelain Wall Tiles
 Brushed Metal Shaver Socket
 Clear Glass Shower / Bath Screens
 Floor Hung WC with Soft-close Seat

Bedroom

Built-in Wardrobe to Master Bedroom
 Carpet to Halls, Landings & Bedrooms

General

Amtico Spacia Flooring to Ground Floor
 Matt Paint Finish to Walls & Ceilings
 Solid Doors & Decorative Architraves
 Skirting with Satin Wood Finish
 Brushed Metal Switches & Sockets
 Brushed Satin Nickel Door Ironmongery
 Satellite & CAT 6 Data & TV Points
 Digital Thermostat
 Air Source Heat Pump with Radiators

External

Outside Electrical Socket
 Paving Slabs to Garden and Private Outdoor Space
 Lighting to Private Outdoor Space



Plot One | Ground & First

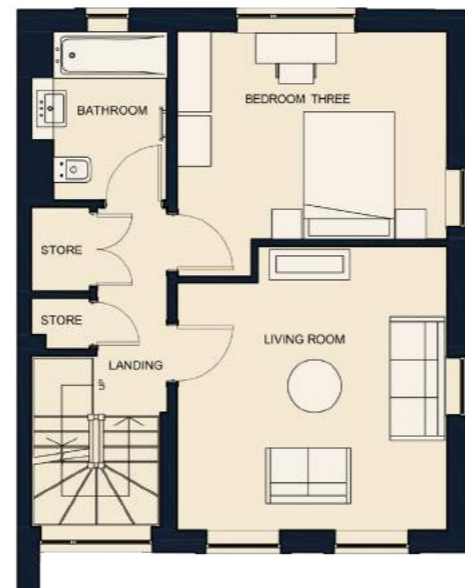
1291.70 FT² | 120 M²

Plot One | Second & Roof Terrace

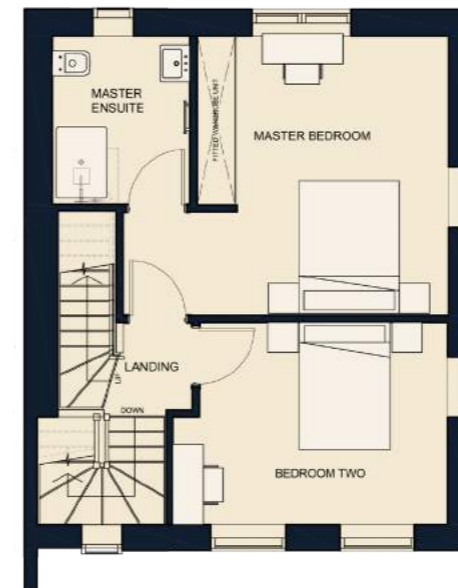
1291.70 FT² | 120 M²



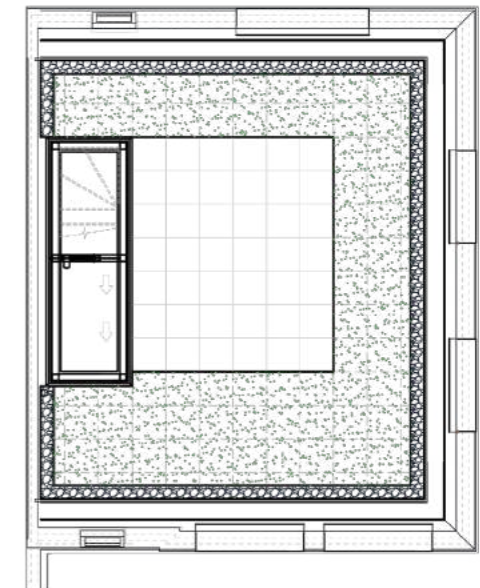
GROUND FLOOR



FIRST FLOOR



SECOND FLOOR



ROOF TERRACE

KITCHEN/DINING	5.30M x 4.05M	17.40FT x 13.30FT	21.30M ² 229.30FT ²
WC	1.90M x 1.50M	6.25FT x 4.90FT	2.90M ² 31.20FT ²
LIVING ROOM	4.25M x 4.05M	13.15FT x 13.30FT	16.40M ² 176.55FT ²
BEDROOM THREE	4.10M x 3.00M	13.30FT x 10.15FT	13.10M ² 141.00FT ²
BATHROOM	2.50M x 1.70M	8.20FT x 5.60FT	4.55M ² 49.00FT ²

MASTER BEDROOM	4.15M x 3.75M	13.60FT x 13.30FT	17.30M ² 186.20FT ²
MASTER ENSUITE	2.50M x 2.05M	8.20FT x 6.75FT	5.15M ² 55.45FT ²
BEDROOM TWO	4.10M x 3.00M	13.45FT x 9.85FT	11.80M ² 127.00FT ²

Plot Two | Ground & First

1328.25 FT² | 123.40 M²



GROUND FLOOR



FIRST FLOOR

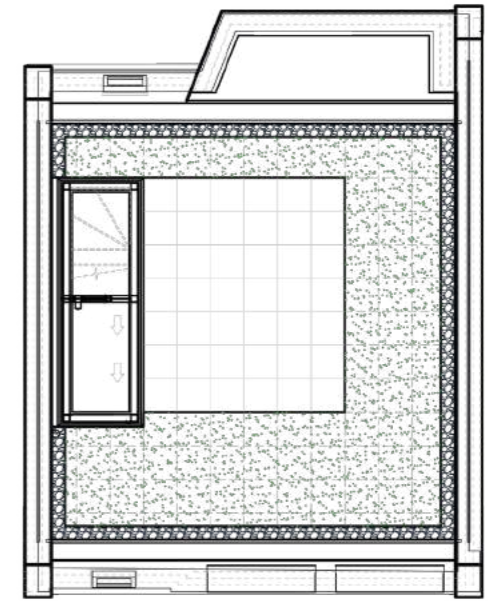
KITCHEN/DINING	5.30M x 3.90M	17.40FT x 12.80FT	20.60M ² 221.75FT ²
WC	1.90M x 1.50M	6.25FT x 4.90FT	2.90M ² 31.20FT ²
LIVING ROOM	4.25M x 3.90M	12.75FT x 13.95FT	15.80M ² 170.05FT ²
BEDROOM THREE	3.65M x 3.90M	12.80FT x 12.00FT	14.35M ² 154.45FT ²
BATHROOM	2.20M x 1.70M	7.20FT x 5.60FT	3.90M ² 42.00FT ²

Plot Two | Second & Roof Terrace

1328.25 FT² | 123.40 M²



SECOND FLOOR



ROOF TERRACE

MASTER BEDROOM	4.75M x 3.65M	15.60FT x 12.00FT	18.55M ² 199.70FT ²
MASTER ENSUITE	2.10M x 2.15M	7.05FT x 6.90FT	4.55M ² 49.00FT ²
BEDROOM TWO	3.65M x 3.00M	12.00FT x 9.85FT	11.65M ² 125.40FT ²

Plot Three | Ground & First

1328.25 FT² | 123.40 M²



GROUND FLOOR



FIRST FLOOR

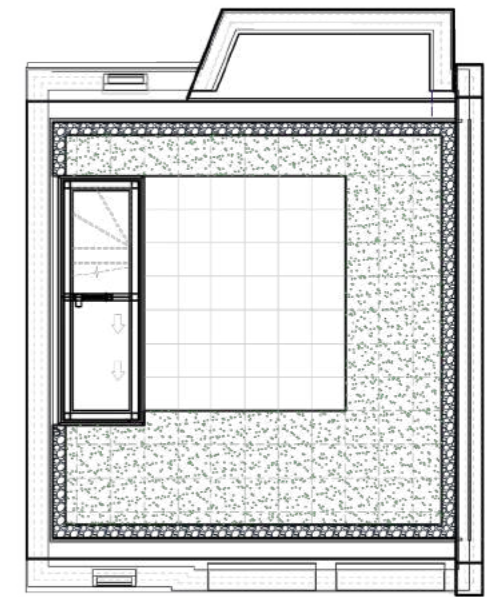
KITCHEN/DINING	5.30M x 3.90M	17.40FT x 12.80FT	20.60M ² 221.75FT ²
WC	1.90M x 1.50M	6.25FT x 4.90FT	2.90M ² 31.20FT ²
LIVING ROOM	4.25M x 3.90M	12.75FT x 13.95FT	15.80M ² 170.05FT ²
BEDROOM THREE	3.65M x 3.90M	12.80FT x 12.00FT	14.00M ² 150.70FT ²
BATHROOM	2.20M x 1.70M	7.20FT x 5.60FT	3.90M ² 42.00FT ²

Plot Three | Second & Roof Terrace

1328.25 FT² | 123.40 M²



SECOND FLOOR



ROOF TERRACE

MASTER BEDROOM	4.75M x 3.65M	15.60FT x 12.00FT	18.55M ² 199.70FT ²
MASTER ENSUITE	2.10M x 2.15M	7.05FT x 6.90FT	4.55M ² 49.00FT ²
BEDROOM TWO	3.65M x 3.00M	12.00FT x 9.85FT	11.65M ² 125.40FT ²

Plot Four | Ground & First

1328.25 FT² | 123.40 M²



GROUND FLOOR



FIRST FLOOR

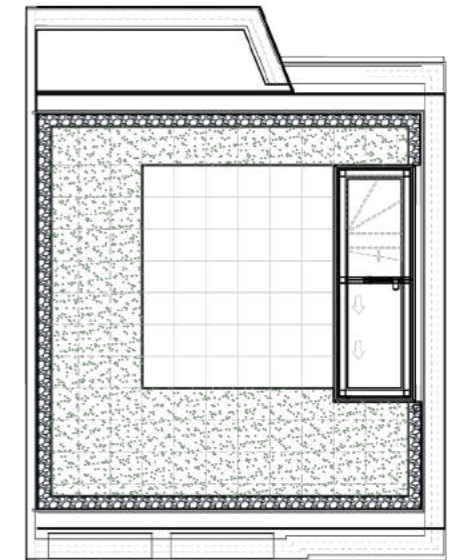
KITCHEN/DINING	5.30M x 3.90M	17.40FT x 12.80FT	20.60M ² 221.75FT ²
WC	1.90M x 1.50M	6.25FT x 4.90FT	2.90M ² 31.20FT ²
LIVING ROOM	4.25M x 3.90M	12.75FT x 13.95FT	15.80M ² 170.05FT ²
BEDROOM THREE	3.65M x 3.90M	12.80FT x 12.00FT	14.35M ² 154.45FT ²
BATHROOM	2.15M x 1.70M	7.20FT x 5.60FT	3.90M ² 42.00FT ²

Plot Four | Second & Roof Terrace

1328.25 FT² | 123.40 M²



SECOND FLOOR



ROOF TERRACE

MASTER BEDROOM	4.80M x 3.65M	15.75FT x 12.00FT	18.95M ² 204.00FT ²
MASTER ENSUITE	2.10M x 2.15M	7.05FT x 6.90FT	4.55M ² 49.00FT ²
BEDROOM TWO	3.65M x 3.00M	12.00FT x 9.85FT	11.65M ² 125.40FT ²

Plot Five | Ground & First

1447.75 FT² | 134.50 M²



GROUND FLOOR



FIRST FLOOR

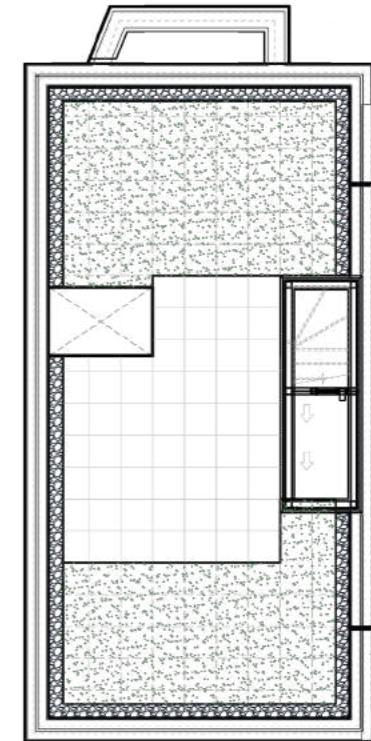
LIVING AREA	4.15M x 4.85M	13.60FT x 15.90FT	10.65M ² 114.65FT ²
KITCHEN/DINING	5.90M x 2.95M	19.35FT x 9.70FT	18.85M ² 202.90FT ²
WC	1.90M x 1.65M	6.25FT x 5.40FT	3.40M ² 36.60FT ²
LIVING ROOM	4.75M x 3.15M	15.60FT x 12.80FT	16.30M ² 175.45FT ²
BEDROOM THREE	4.75M x 3.35M	15.60FT x 11.00FT	14.20M ² 152.85FT ²
BATHROOM	2.50M x 2.30M	8.20FT x 9.85FT	5.45M ² 58.65FT ²

Plot Five | Second & Roof Terrace

1447.75 FT² | 134.50 M²



SECOND FLOOR



ROOF TERRACE

BEDROOM TWO	4.70M x 3.95M	15.40FT x 12.95FT	14.30M ² 153.95FT ²
BATHROOM TWO	2.45M x 1.90M	8.05FT x 6.25FT	4.60M ² 49.50FT ²
BEDROOM THREE	4.75M x 3.35M	15.60FT x 11.00FT	14.20M ² 152.85FT ²

About Mizén

Mizén is a leading privately-owned property developer and construction business based in London. The group was founded in 1986 by Executive Chairman Bernard Jos.Tansey.

Mizén Properties Limited (the Group Holding Company) has significant experience in Land Acquisition, Project Design & Construction, Project Management and Finance.

In fact, the aggregated and accumulated experience of the principals and senior managers is well in excess of 600 years. Mizén is administratively well structured with strong financial resources. This, together with its technical competence and commercial acumen, makes the company well suited to support the demands of an expanding and discerning client base.

The Mizén Group of companies headquarters are located at No. 1 Railshead Road, St Margarets, Old Isleworth, Middlesex, TW7 7EP.

These particulars are not to be considered as a formal offer, they are for information only and give a general idea of the property. They are not to be taken as forming any part of a resulting contract, nor to be relied upon as statements or representations of fact. Whilst every care has been taken in their preparation, no liability can be accepted for their inaccuracy. Intending purchasers must satisfy themselves by personal inspection or otherwise as to the correctness of these particulars which are issued on the understanding that all negotiations are conducted through the developer or its agent. These particulars are correct at time of issue. In view of our continuing aim to improve our developments the detailed specification and/or layouts may change. If any points are important please clarify with us prior to viewing. These particulars are issued strictly on the basis that no visits to site will be made unless accompanied by the selling agent.





GRANVILLE MEWS



555-563
HIGH ROAD | FINCHLEY
N12

